

# U5L6 Cyclic Quadrilaterals (last lesson of this unit)

Test next Monday

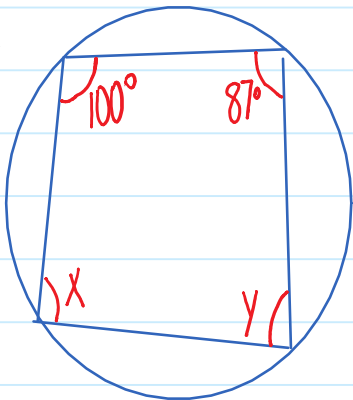
April-20-15 9:36 AM

(in a circle)

(4-sided shape)

Note: The opposite angles of a cyclic quadrilateral add to  $180^\circ$

eg 1)



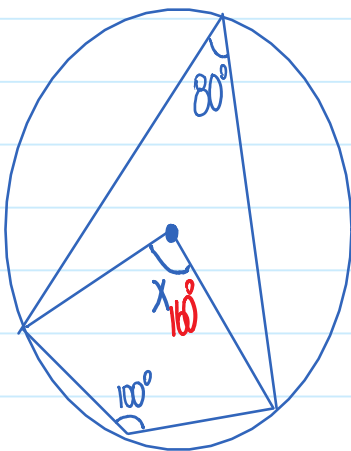
$$\overset{-100}{100} + \overset{-100}{y} = 180$$

$$\boxed{y = 80} \checkmark$$

$$\overset{-87}{87} + \overset{-87}{x} = 180$$

$$\boxed{x = 93} \checkmark$$

eg 2)



$$x = 160^\circ$$

Assignment: U5L6 wkst #1-3 (A, C, E), 4, 5 /17