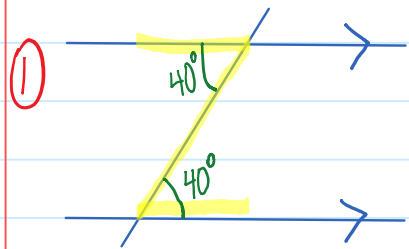


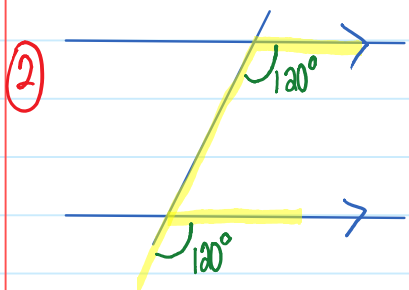
U5L2 Angles in Parallel Lines

April-08-15 8:55 AM

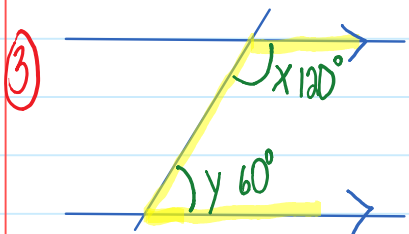
April 8, 2015



Alternate (Z) Angles are equal



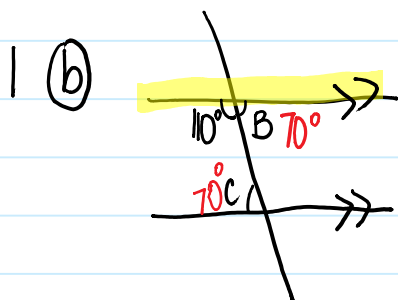
Corresponding (F) Angles are equal



CO-interior (E) Angles add up to 180°

$$x + y = 180^\circ$$

Wkst:



Assignment: U5L2 # 1 & 2 / 32 mks